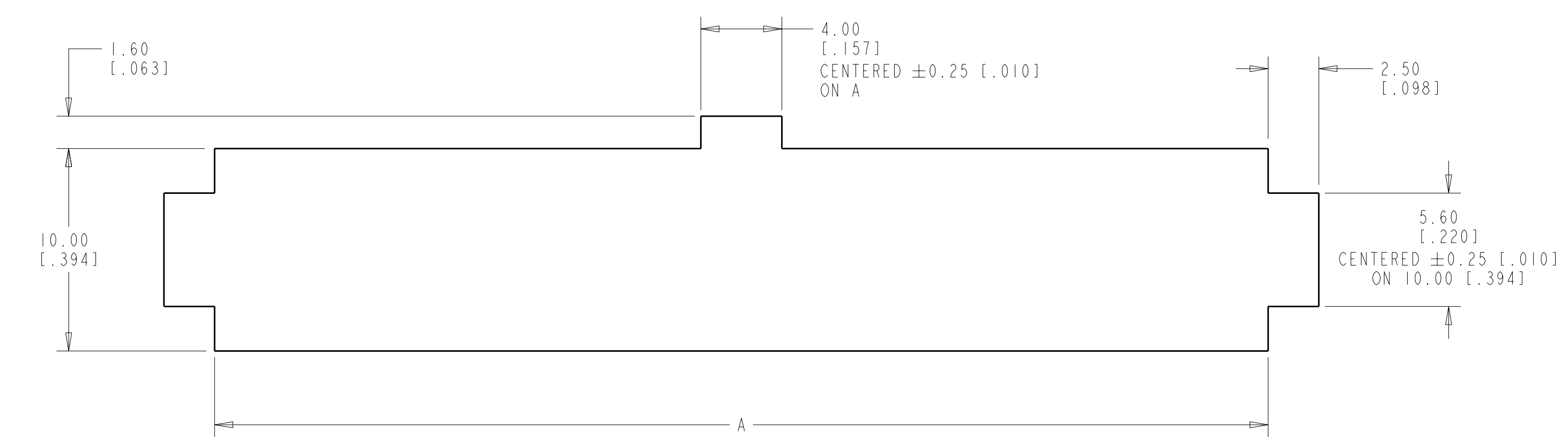
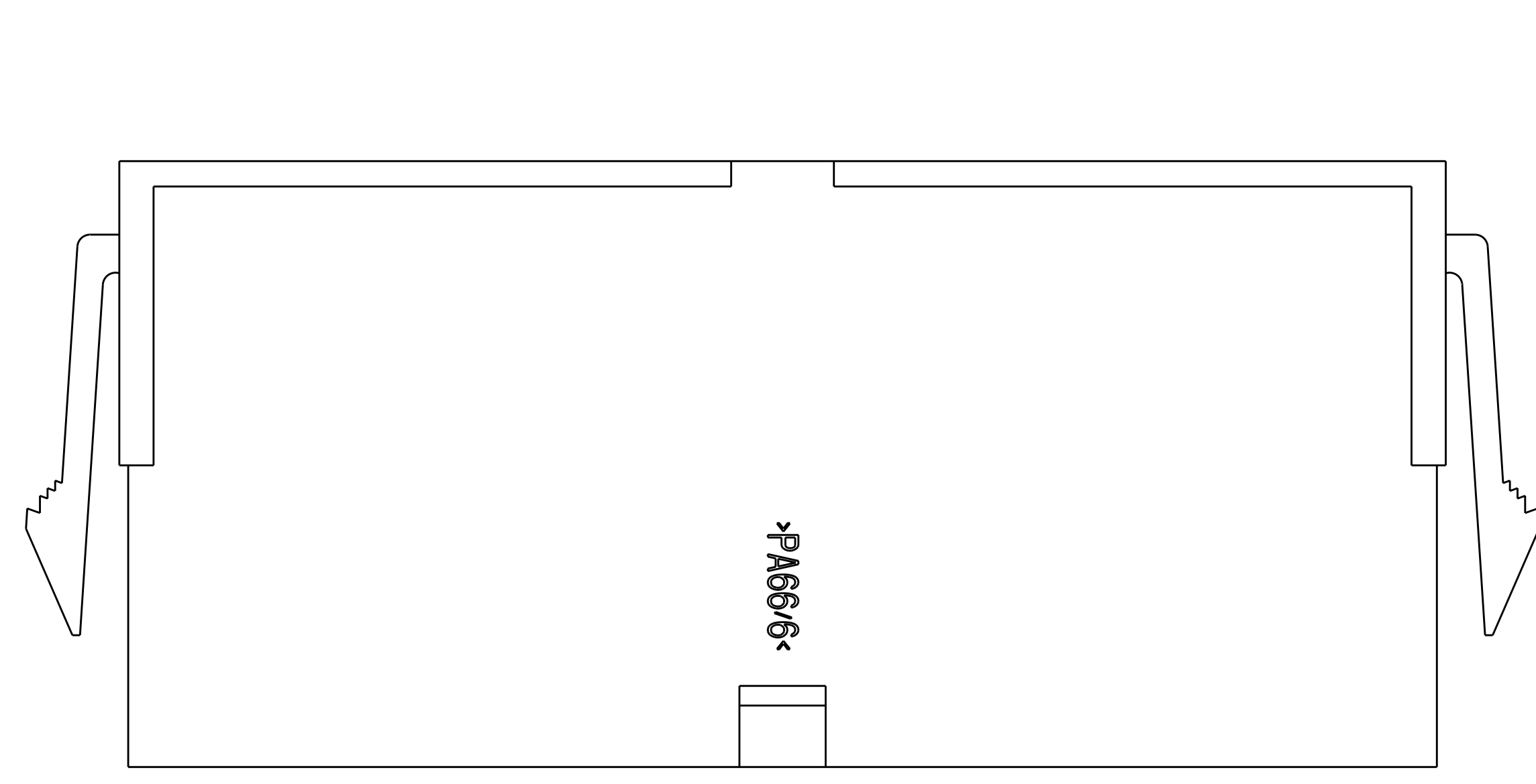
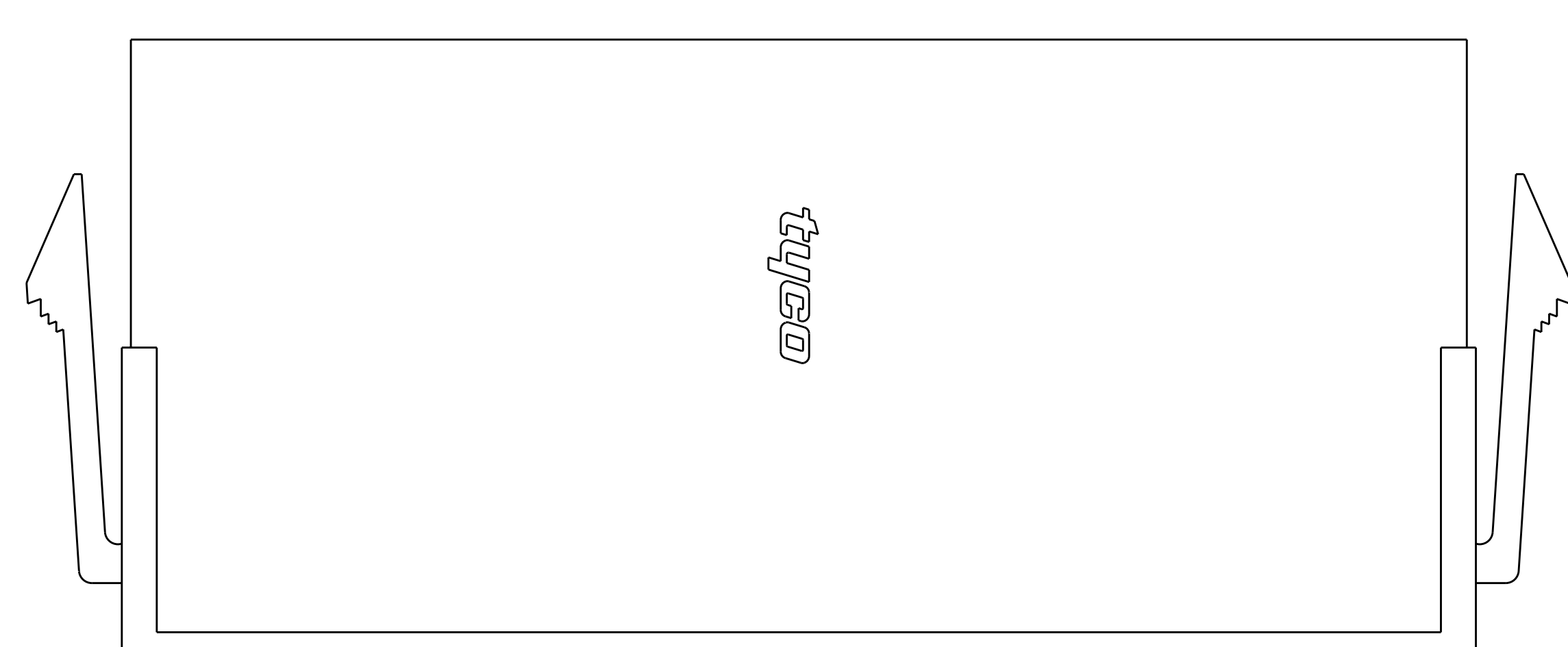
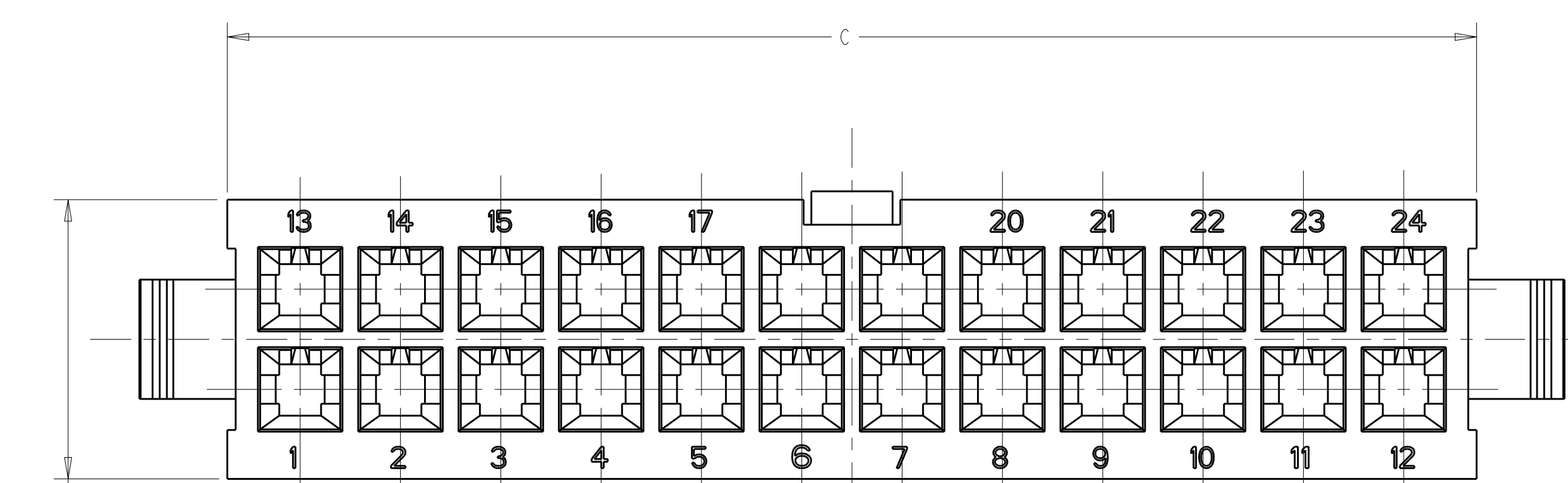
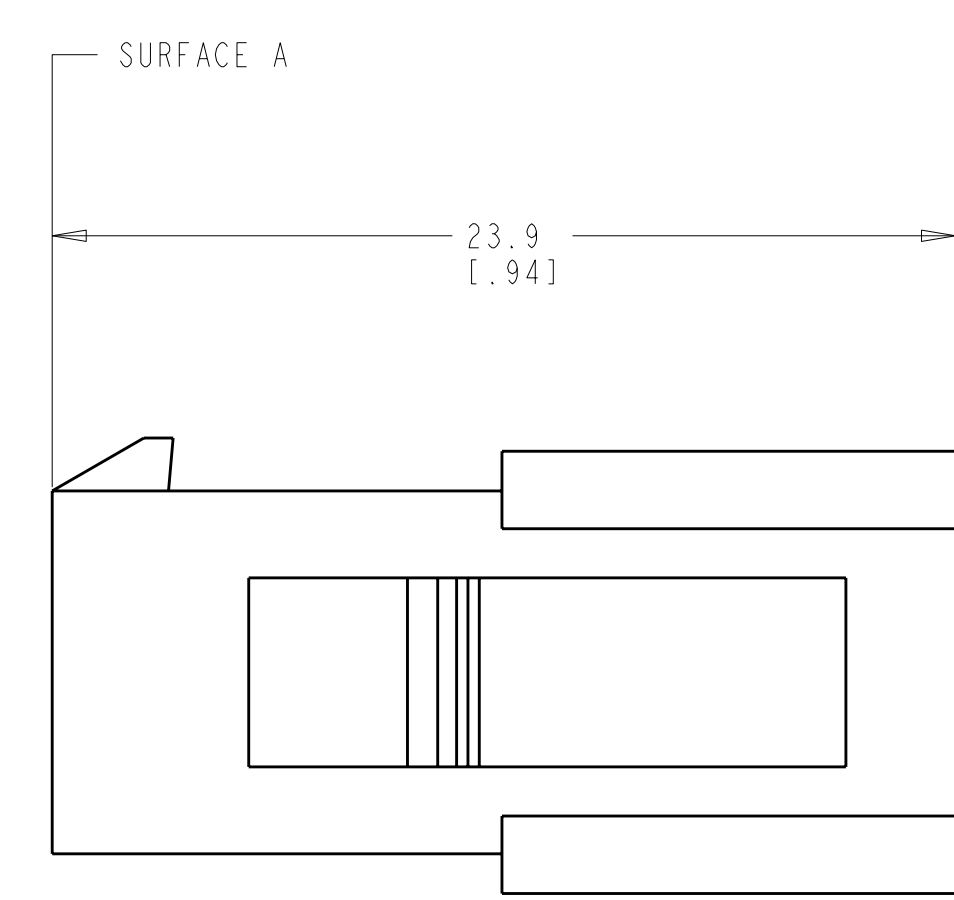
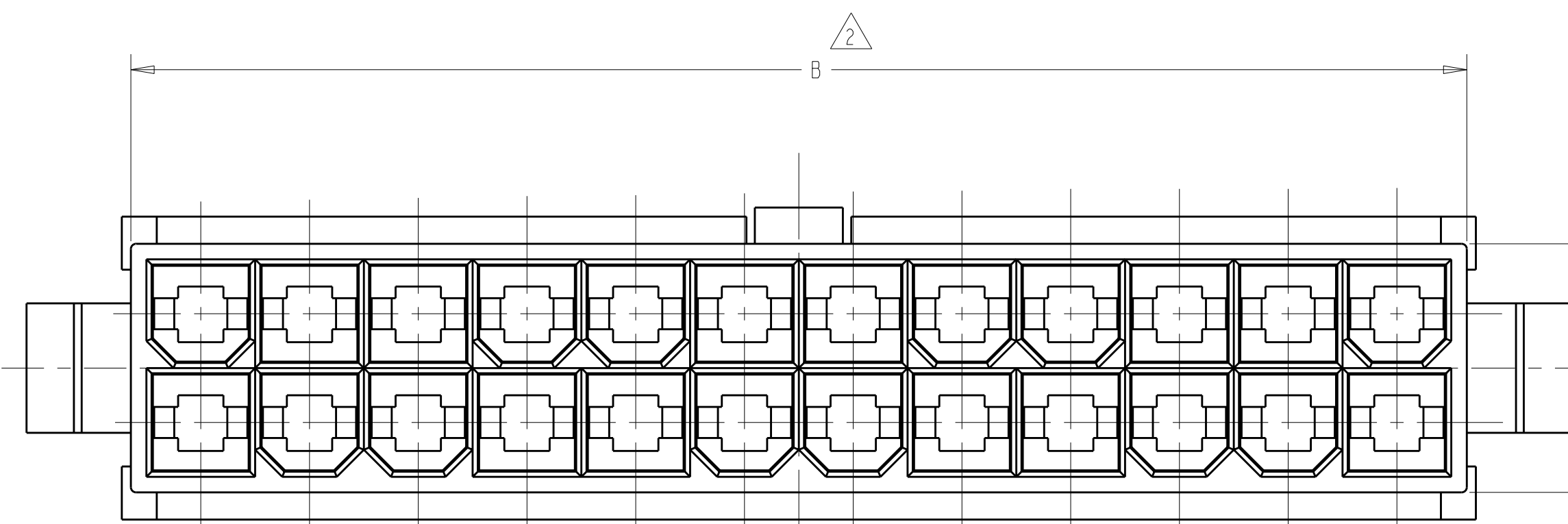


LOC	DIST	REV	DATE	BY	CHK	APPV
CM	00	C	11NOV2009	HMR	KR	



RECOMMENDED CUT OUT
 FOR 2.00 [.079] MAX. THICK PANEL



△ NYLON, UL94V-0, NATURAL (WHITE).

△ DIMENSION TO BE CHECKED AT SURFACE A.

3. DIMENSIONS IN BRACKETS ARE IN INCHES.

4. MALE CONTACTS MUST BE INSERTED SO THAT THE TOP OF THE WIRE AND INSULATION CRIMPS ARE FACING THE SIDE OF THE HOUSING WITH THE LOCKING LATCH.

5. RECOMMENDED MAX. PANEL THICKNESS 2.00 [.079].

6. PANEL MUST BE PUNCHED SO THAT THE HOUSING ENTERS THE PANEL IN THE SAME DIRECTION AS THE PUNCH.

C	B	A	NO. OF POSITIONS	PART NUMBER
52.3[2.059]	51.6[2.032]	52.00[2.047]	24	2-794598-4
48.1[1.894]	47.4[1.866]	47.80[1.882]	22	2-794598-2
43.9[1.728]	43.2[1.701]	43.60[1.717]	20	2-794598-0
39.7[1.563]	39[1.535]	39.40[1.551]	18	1-794598-8
35.5[1.398]	34.8[1.370]	35.20[1.386]	16	1-794598-6
31.3[1.232]	30.6[1.205]	31.00[1.220]	14	1-794598-4
27.1[1.067]	26.4[1.039]	26.80[1.055]	12	1-794598-2
22.9[.902]	22.2[.874]	22.60[.889]	10	1-794598-0
18.7[.736]	18[.709]	18.40[.724]	8	794598-8
14.5[.571]	13.8[.543]	14.20[.559]	6	794598-6
10.3[.406]	9.6[.378]	10.00[.394]	4	794598-4
6.1[.240]	5.4[.213]	5.80[.228]	2	794598-2

4805 (2/09) P&E/ENGINEER DRAWING

49 METRIC

DIMENSIONS: mm [INCHES]	TOLERANCES UNLESS OTHERWISE SPECIFIED:	9 PLC ± .2 [0.01]	5 PLC ± .1 [0.005]	4 PLC ± .1 [0.005]	ANGLES 40° 30'	FINISH
MATERIAL						

DWN S. HOOVER 11-OCT-2004	CHK D. COLEY 11-OCT-2004	APPV D. COLEY 11-OCT-2004
Tyco Electronics AMP Incorporated Harrisburg, PA 17105-3608		
PRODUCT SPEC: PLUG, PANEL MOUNT, 2 TO 24 POSITION, AMP-DUACTM POWER CONNECTOR		
SIZE: A1	CAGE CODE: 00779	DRAWING NO: C-794598
CUSTOMER DRAWING		

SCALE: 4:1 SHEET 1 OF 1 REV C