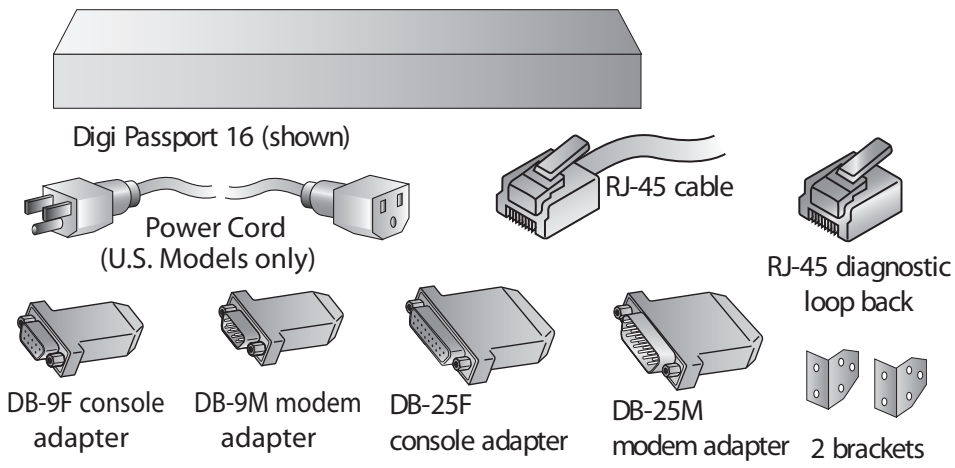


1 Verify kit contents

a Verify that your kit contains one each of the following components:



A free hard copy of the User Guide can be ordered at: www.digi.com/csuserguide



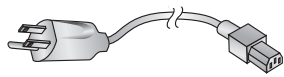
Quick Start Guide

Digi Passport™

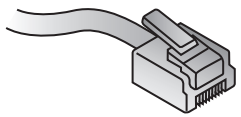
90000768_F

2 Connect hardware

a Connect power supply



b Connect Ethernet cable



Digi Passport

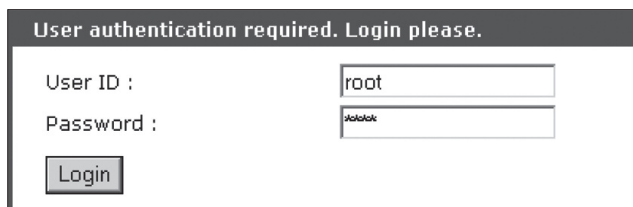
Note: Only U.S. models come with power cord.

4 Test configuration

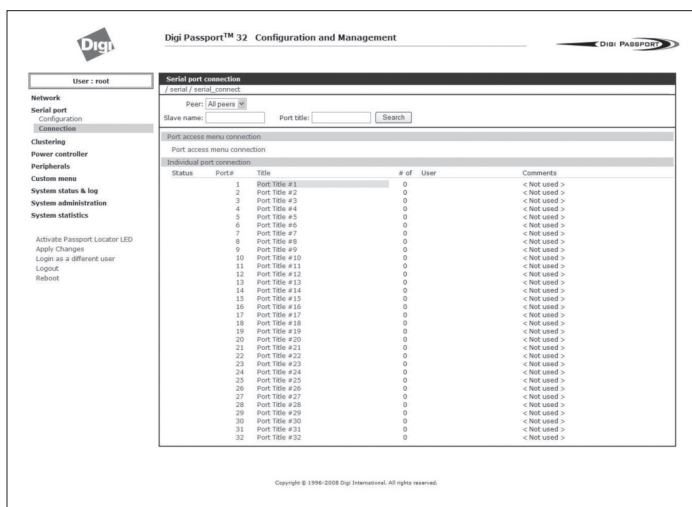
a Insert RJ-45 diagnostic loop back into Port # 1



b Enter:
User ID root
Password dbps

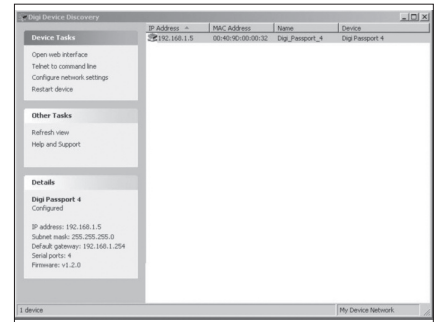


c On the left navigation bar, Click Serial Port > Connection > Port Title #



3 Assign network settings

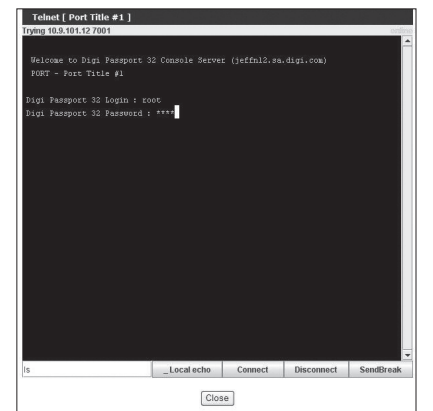
a Run the Advance Device Discovery Protocol application to locate the Digi Passport on the network. The Passport has SNMP, SSHv1, and Telnet to the command line disabled by default, and http is automatically redirected to https. To perform initial device configuration, use the discovery tool available from the Digi website or use our straight-thru serial cable with the appropriate adapter to the Passport console port, https, or SSHv2.



Are you a POWER USER? Use the configuration menu

1. Establish a serial connection through the console port (9600, 8, N, 1).
2. Login as `root` and password `dbps`.
3. Type the command `configmenu`. Select Option 1. Network Configuration and follow the prompts.
4. Enter the IP address in the URL address bar of your browser and go to step 4 Test configuration . (The default address is 192.168.161.5.)

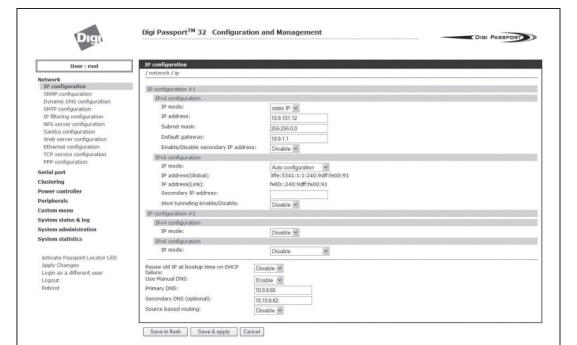
d Log in to port 1
Username root
Password dbps



Verify your connection to the port by typing some text. If the text appears correctly on the screen, the configuration is correct.

Click Close to exit port.

e Congratulations!
You have successfully installed your Digi Passport. Configure the device for your application using your browser. To get back to your Digi Passport after your initial configuration, enter the IP address in the URL address bar and log in. Use the navigation bar on the left to alter your configuration.



Below is a list of available adapters and part numbers.

Connection	Adapters (in quantities of 8)	Order #	Application
	DB-9M Modem adapter	76000702	DCE devices such as modems with DB9 female ports
	DB-9F Console adapter	76000671	Bay Accelar, Nortel and other DB-9 DTE
	DB-25F Console adapter	76000673	DTE devices with DB-25 male ports
	DB-25M Modem adapter	76000670	DCE devices such as modems
	DB-25M Console adapter	76000672	Sun SPARC and other DTE devices with DB-25 female ports