

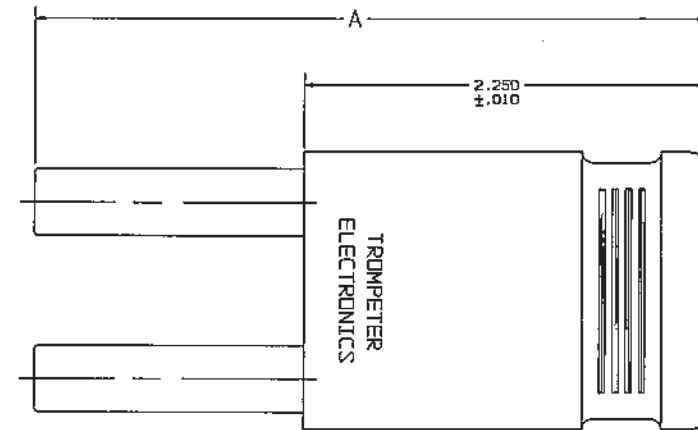
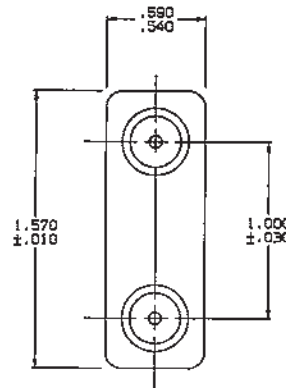
# RED INDICATES ORIGINAL

DATA CONTAINED IN THIS DOCUMENT IS PROPRIETARY TO TROMPETER ELECTRONICS INC. AND SHALL NOT BE DISCLOSED, COPIED OR USED FOR PROCUREMENT OR MANUFACTURE WITHOUT EXPRESS WRITTEN PERMISSION.

REV		EO	DESCRIPTION	OWN	APPROVED	DATE
H		12580	CHANGED CASE COLOR TO GREEN/BLACK FOR -7 SEE ECD	R L	<i>[Signature]</i>	12/23/98

DASH NO	MODEL NO	IMPEDANCE VALUE	CASE COLOR	A DIM
-1	LPL-50	50 OHMS	GREEN	3.765
-W1	LPLW-50 $\triangle A$			3.458
-2	LPL-75	75 OHMS	VIOLET	3.765
-W2	LPLW-75 $\triangle A$			3.458
-3	LPL-93	93 OHMS	WHITE	3.765
-W3	LPLW-93 $\triangle A$			3.458
-4	LPL-4 $\triangle S$	$\triangle S$	BLACK	3.765
-W4	LPLW-4 $\triangle S \triangle A$			3.458
-5	LPL-5 $\triangle S$		3.765	
-W5	LPLW-5 $\triangle S \triangle A$		3.458	
-6	LPL-6 $\triangle S$		GRAY	3.765
-W6	LPLW-6 $\triangle S \triangle A$		3.458	
-7	LPL-7 $\triangle S$		GREEN/BLACK	3.765

INCH	MM
.010	0.25
.030	0.76
.540	13.72
.590	14.89
1.000	25.40
1.570	39.88
2.250	57.15
3.458	87.83
3.765	95.63



-W2, -W4-75, -W5-75 & -W6-75 SHOWN

- $\triangle A$  50  $\Omega$  DOUBLE SHIELDED RG223-M17/187-00001
- $\triangle S$  IMPEDANCE VALUE OF -4 THRU -W6, MAY BE -50, -75, OR -93 (OHMS). EXAMPLE: 1-0338-4-50, -4 -75, ETC
- $\triangle A$  PREFIX "W" DENOTES AT&T TYPE. ALL OTHERS RCA
- 3. COAXIAL LARGE SPACING STANDARD SIZE LOOPING PLUG
- 2. FINISH: BARRELS, TFS-1A OR TFS-1U (NICKEL) CASE (SEE CHART)
- 1. ALL DIMENSIONS ARE IN INCHES

QTY	DESCRIPTION	PART NUMBER	ITEM
TO UNLESS SPECIFIED .000 ±.000 .0000 ±.0000 ANGLES	<b>TROMPETER</b> RF connectivity	LPL / LPLW	
155-0572	DWN R L 12/21/98	MATERIAL CODE IDENT 14949	DRAWING NO. 1-0338
155-0552	CHK <i>[Signature]</i> 12-22-98	ENGR	REV H
NEXT ASSY	APPR <i>[Signature]</i> 12-22-98	SCALE: 1/1	DATE 6-12-89 SHEET 1 OF 2